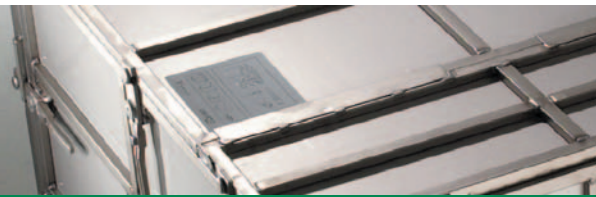




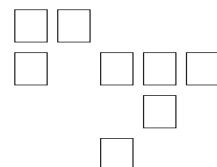
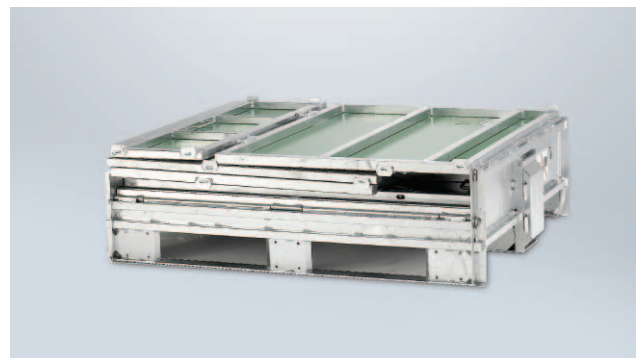
UNIFOLD®1000



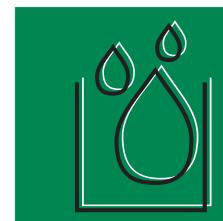
TPS RENTAL SYSTEMS IBC



UNIFOLD®1000 is designed specially for storage and transportation of liquid products. The advanced features of UNIFOLD® overcome the shortcomings of many of the rival bag in box systems. Easy to clean and assemble with no parts to loose, the UNIFOLD® corresponds to the requirements concerning hygiene standards of the food and cosmetic industries.



EFFICIENT SOLUTIONS



UNI-FOLD®

UNIFOLD®1000



Specifications

Frames: 30 mm RHS galvanized steel tubes
Panels: 0.9 mm colour coated sheet steel
Fittings: Galvanized soft steel
Pallet: Galvanized soft steel - 4 way entry

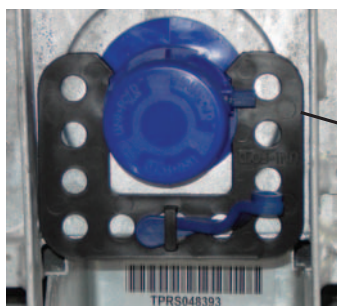
- Compatible with ISO sea container
- All steel construction fully recyclable
- Expected life by normal use: 10 years+

Volume capacity:	1025 litres
External dimensions (LxWxH):	1247x1018x1170 mm
Flat pack dimensions (LxWxH):	1247x1018x370 mm
Tare weight with lid:	157 kg
Maximum dynamic load:	2 tons
Maximum static load:	10 tons

Operating capabilities:

Free stacking height - unfolded:	5 units
Free stacking height - folded:	15 units
Return ratio per vehicle load space:	6 units
Functional temperature range:	-30°- +65° C

Integral valve options



Front Valve DIN50



Bottom Valve S60



Front Valve S60